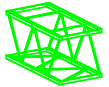


NOTES

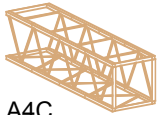
Assemble central tower first, then assemble wing sections.

Flat side of saddle bracket attaches to header frame. Secure it to the horizontal, about 5" from leg, with the long pin.

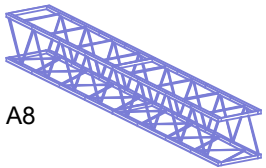
Box frame attaches between bracket and header frame



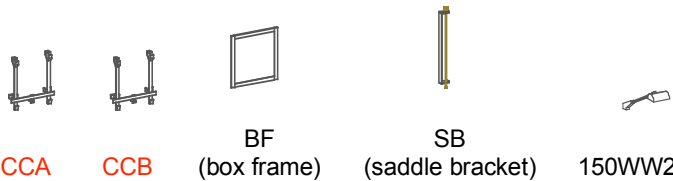
A2



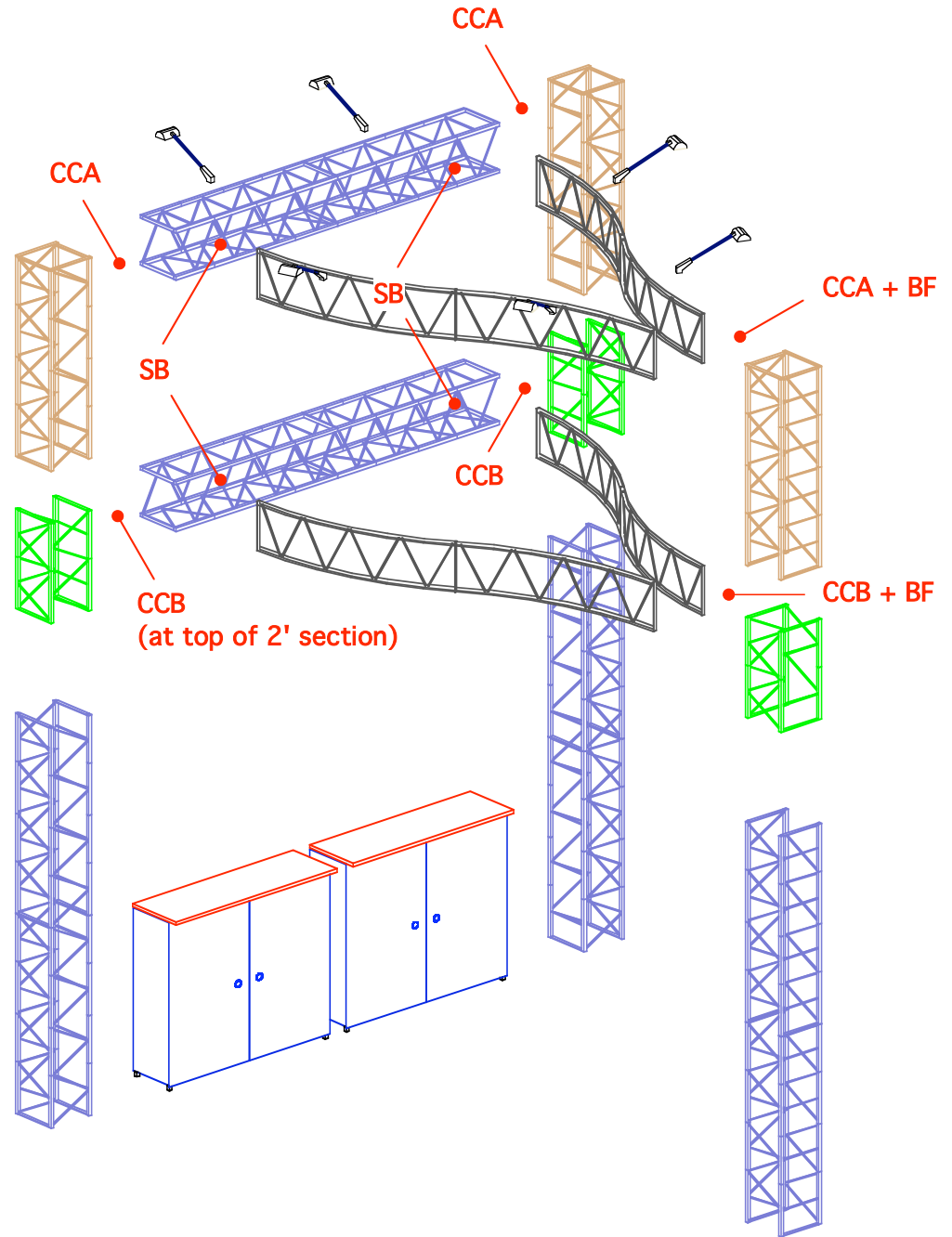
A4C



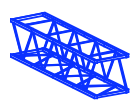
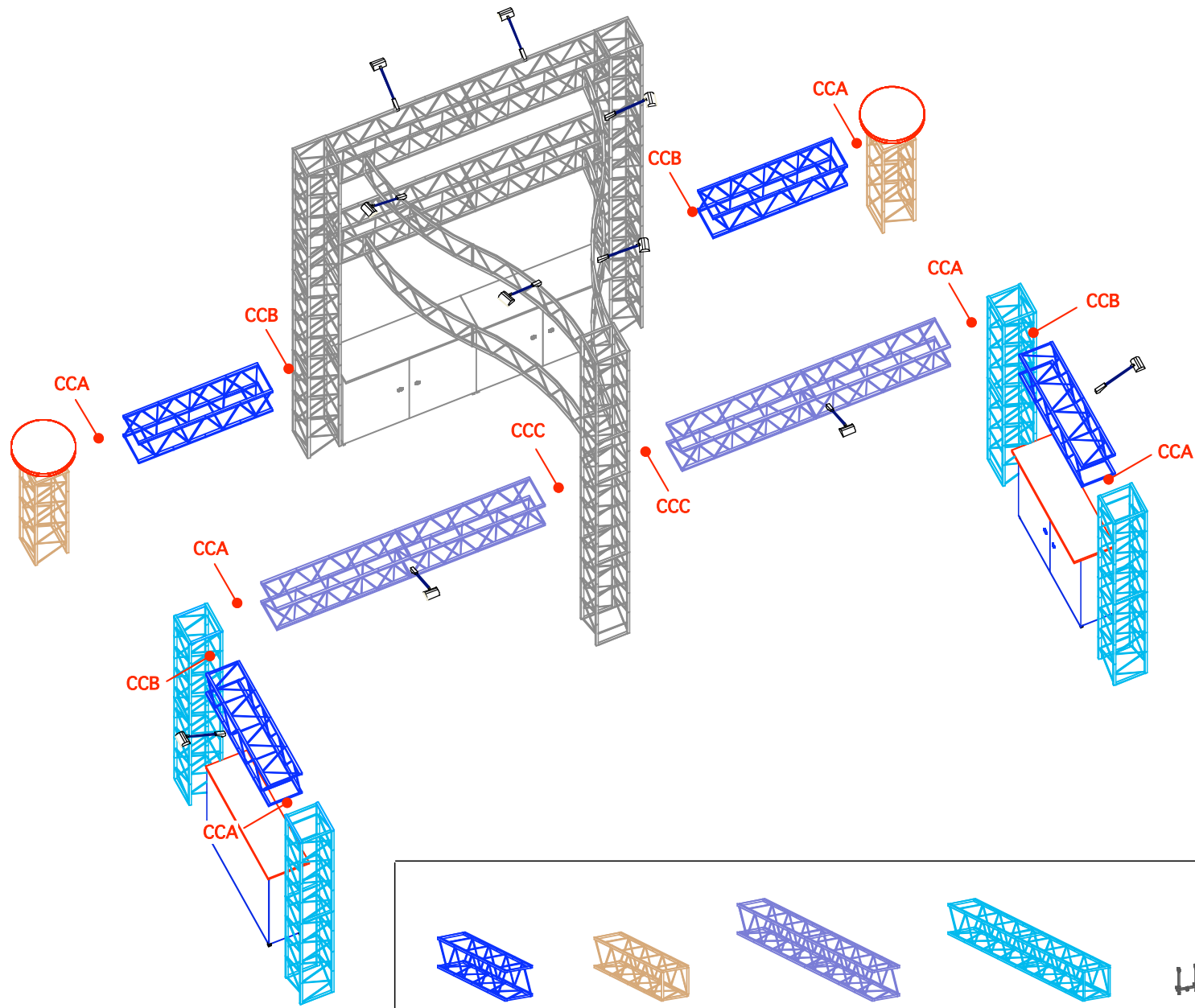
A8



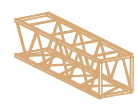
CCA CCB BF (box frame) SB (saddle bracket) 150WW24



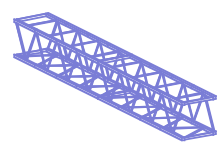
DRAWN BY: NG



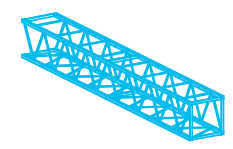
A4



A4C



A8



A8C



CCA



CCB



CCC



150WW24



DRAWN BY: NG

DESIGN : EZ12 EMERALD, Page 2 of 2

DATE: 4/08

REFERENCE: 20x20

© Trussworks 2008

The designs shown herein are the proprietary property of Trussworks and protected by copyright and other laws. This document is to be maintained in confidence. No portion of the information or design shown herein may be reproduced, electronically or otherwise, nor may any display be made from this design without written consent from Trussworks.